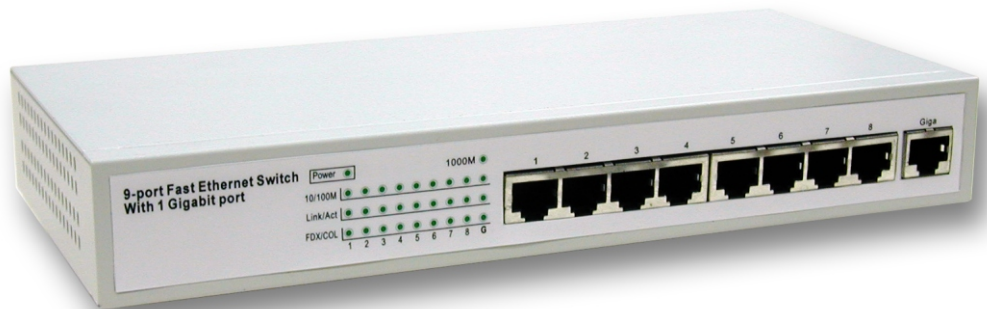


# 9 Port Fast Ethernet Switch with 1 Gigabit port

## Features:

- Auto-negotiation on all ports to match the speed of the attached devices
- 1 Gigabit Copper Uplink port for connection to Backbone or Server
- NWay switch ports support full and half duplex, 10Mbps and 100Mbps connections
- Auto cross-over on all ports
- Automatic polarity correction
- Plug-n-play installation
- Comprehensive LED status panel
- Simple migration to switched Fast Ethernet and protects your network investment



## **US4009G Dual E-Switch 9 (Internal PSU)**

8-port Desktop NWay (10/100Mbps) Ethernet Switch with 1-port Gigabit Copper Uplink

The Dual E-Switch 9 series provide the most economical way to upgrade your network performance to switched Fast Ethernet. They provide 10Mbps and 100Mbps dedicated bandwidths in each port, which is needed by most users for common operations, as well as to relieve serious network congestion, run multimedia applications, or satisfy power users. With the additional Gigabit Uplink port, US4009G is ideally suited for integrating Gigabit Backbone to 10/100Mbps Workgroup networks.

The Dual E-Switch series conforms fully to Ethernet, Fast Ethernet and Gigabit Ethernet standards to ensure compatibility and interoperability, and most importantly, these Switches are very affordable to point of price level of shared bandwidth Hubs.

Dual E-Switch 9 is housed in a mini desktop case, it comes with internal power supply to meet all market requirements. The Dual E-Switch series provides a comprehensive status LED panel providing valuable network information for ease of diagnostics and troubleshooting.

# 9 Port Fast Ethernet Swith with 1 Gigabit port

## Specifications:

### Compatibility

Standards	Conformance IEEE 802.3 10BASE-T, IEEE 802.3u 100BASE-TX, IEEE 802.3ab 1000BASE-T
Ports	9 RJ-45 (STP) ports (auto cross-over)
Switching Method	Store and forward
Transmission Mode	Auto-negotiation (10/100Mbps, full/half-duplex)
MAC Address Table	4K Entries
Buffer Memory	2Mb
Filtering and Forwarding Rate	Line speed
Supported Cable	100W Cat. 5 twisted-pair
Power	Universal internal power supply
Operating Temperature	5 to 50 degree C
Storage Temperature	-20 to 65 degree C
Humidity	10% to 90% non-condensing
Dimensioms	251 x 37 x 118mm
Status LEDs	Per port: Speed, Link/Activity, Full/Half Duplex Per unit: Power
Certification	FCC A, CE Mark

Mototech product specifications are subjected to change without notice.

Mototech™ is a trademark of Mototech Inc.

Other brand and product names are trademarks or registered trademarks of their respective holders.

## Mototech Inc.

### Hsinchu

Number 9, Park Avenue II, Science-Based

Industrial park, Hsinchu 300,

Taiwan, R.O.C.

Phone: 886-3-578-3381

Fax: 886-3-564-1583

E-mail: [service@mototech.com.tw](mailto:service@mototech.com.tw)

Internet: <http://www.mototech.com.tw>



Made in Taiwan P/N: